



Massachusetts Department of Public Health

MDPH Tuesday Infectious Disease Webinar Series

Tools for Local Boards of Health

July 8, 2025

Hillary Johnson, MHS

Senior Epidemiology Advisor to Local Health, Division of Epidemiology

Petra Schubert, MPH

Emerging Infections Coordinator, Division of Epidemiology

Julie Coco, MPH

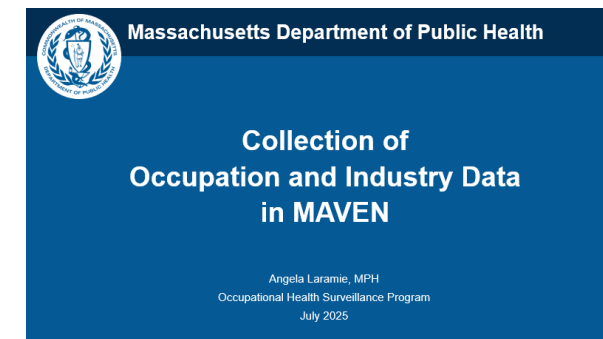
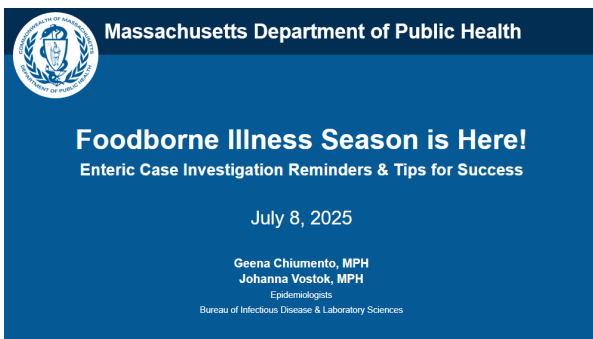
Internship Program and Training Coordinator, Division of Epidemiology

Lionel White, MSIT

Senior Surveillance Research Analyst, MAVEN Training Team

Kate Hamdan, MPH

Surveillance Epidemiologist, MAVEN Training Team Lead



July 8, 2025

- **Morbidity Updates: Measles & Mpox**
- **CDC Materials Warehouse Closing**
- **MAVEN Help Updates**
- **Topics Today:**
 - **Featured Presentation:** Collection of Occupation and Industry Data in MAVEN
 - Angela K. Laramie, MPH, ARM, Occupational Health Surveillance Program
 - **Featured Presentation:** Foodborne Illness Season is Here! Enteric Case Investigation Reminders & Tips for Success
 - Geena Chiumento, MPH, Epidemiologist, Foodborne & Waterborne Illness Coordinator
 - Johanna Vostok, MPH, Epidemiologist, Foodborne & Waterborne Illness Coordinator



Infectious Disease Tools for LBOH Webinar Schedule!

2025 Upcoming Schedule!

All Registrations:	http://tinyurl.com/MAVEN-Webinars
2 nd Tues 7/8/25	Enteric Diseases (Foodborne)
4 th Tues 7/22/25	4 th Tuesday Office Hours
	<i>August Webinar Break</i>
	<i>Happy Summer!</i>
2 nd Tues 9/9/25	Foodborne Illness (FBI) Complaints
4 th Tues 9/23/25	4 th Tuesday Office Hours
2 nd Tues 10/14/25	25-26 Respiratory Illness Season
4 th Tues 10/28/25	4 th Tuesday Office Hours
	<i>November Webinar Break</i>
	<i>Happy Thanksgiving!</i>
2 nd Tues 12/9/25	MAVEN Refresher

WEBINAR REGISTRATION PAGE:

<http://tinyurl.com/MAVEN-Webinars>

- You help us identify topics, needs, & content!
- Be sure to send ideas, requests, and questions to Hillary and Scott!

MAVEN Help has Guidance Documents and Previous Webinars:

<http://www.maven-help.maventrainingsite.com/toc.html>

Next Office Hours
Tuesday, July 22, 2025 @11:00!

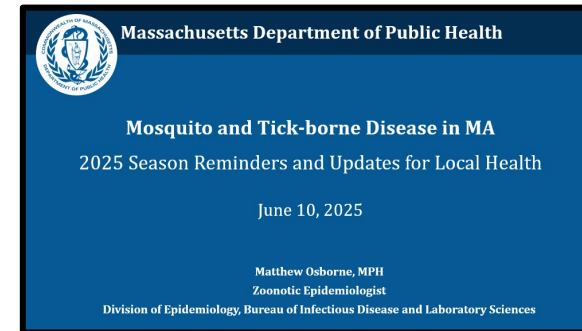


You can always contact
mavenhelp@mass.gov or
The MDPH Epi Program
at 617-983-6800 with
specific questions.

Updates – A quick recap for July 8, 2025

June 10, 2025:

- 2025 Immunization Updates Series
- Morbidity Update: Measles
- Iatrogenic Botulism Investigation Update
- **Featured Presentation:** Arbovirus Season 2025
 - Matthew Osborne, MPH, Zoonotic Disease Epidemiologist III, Division of Epidemiology



Presentation: [PDF Slides](#), [Recording](#)



Always Remember you
can see recent
webinar recordings
and slides in MAVEN
Help.

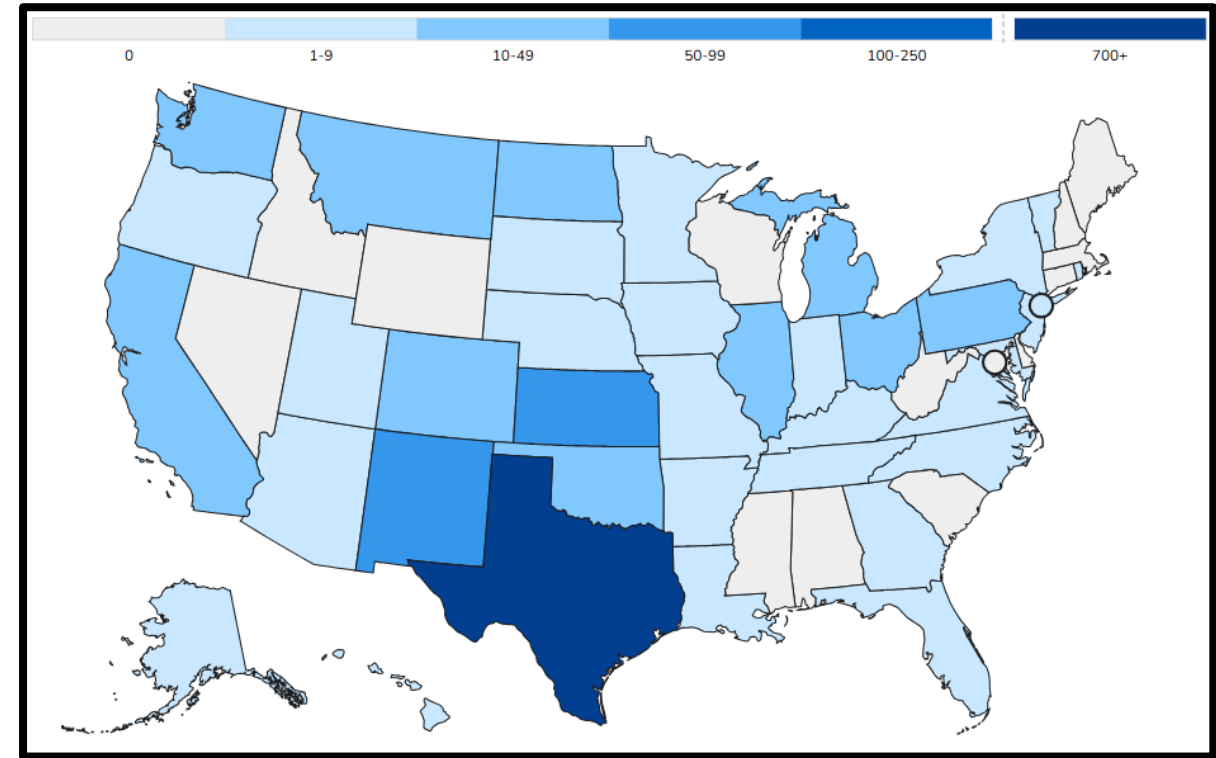
Bookmark the URL!



MAVEN Help: <http://www.maven-help.maventrainingsite.com/toc.html>

U.S. Measles Cases, 2025

- No currently confirmed cases of measles in Massachusetts (7/8/25).
 - One in-state exposure from a traveler occurred in Boston June 7 & 8, 2025.
 - Boston has conducted follow-up with [identified locations](#).
- Nationally, as of July 1, 2025, a total of **1,267*** confirmed measles cases were reported by 38 jurisdictions.
 - ***CDC believes this is an undercount – many cases are not getting tested in some outbreak areas**
 - **285 cases were reported in 2024**
- There have been **27 outbreaks** (defined as 3+ related cases) reported in 2025, and 88% of confirmed cases (1,115 of 1,267) are outbreak-associated.
- **12% (155 of 1,267) Hospitalized**
- **3 confirmed deaths**
 - All three deaths were among unvaccinated individuals.

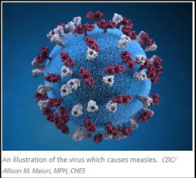


Data as of 7/1/2025. Source: <https://www.cdc.gov/measles/data-research/index.html>

92% of confirmed cases are unvaccinated

Measles Preparedness Reminders

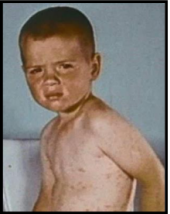
- **Review the Measles training on MAVEN Help**
- What is the LBOH's role?
 - Measles case investigation and control is a **partnership between MDPH and the LBOH**
 - Control measures start at minute 20 of the recording
 - Suspect Case Follow-Up:
 - We are receiving a lot of suspect cases due to the increase in cases nationwide.
 - In general, the State Epidemiologists organize specimen collection/pick-up and then contact locals with next steps.



Introduction to Measles Case Investigation and Follow-Up for LBOHs

February 14, 2023

Hillary Johnson, MHS
Joyce Cohen, MPH



Division of Epidemiology and Immunization
Massachusetts Department of Public Health
305 South Street
Jamaica Plain, MA 02130-3597

1

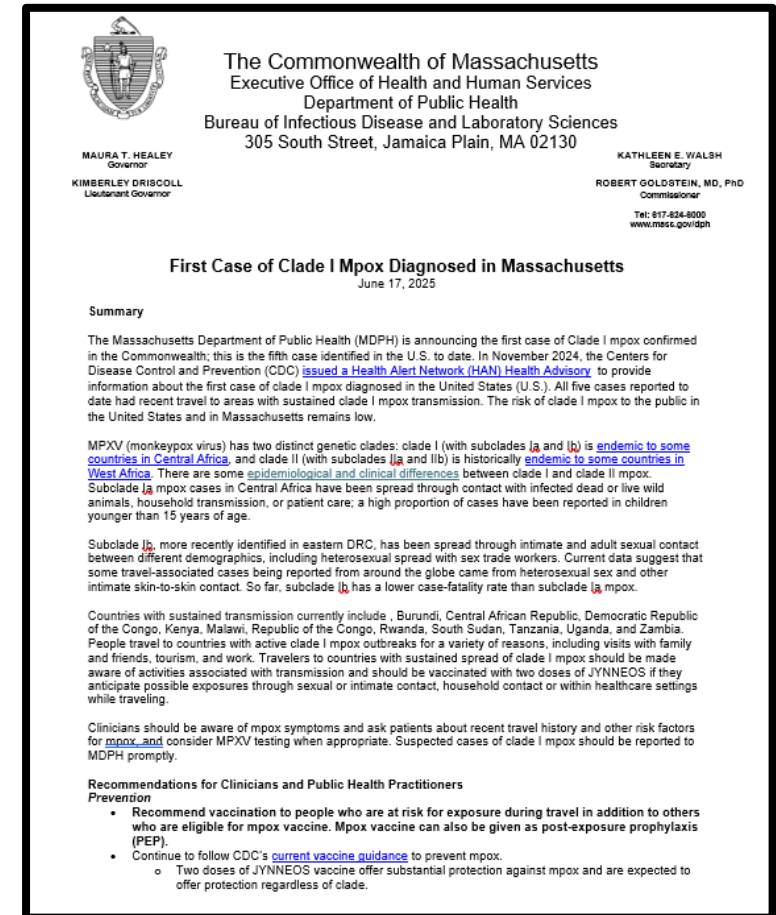
[Intro to Measles Case Investigation and Follow-up Slides](#)
[Intro to Measles Case Investigations and Follow-up Recording](#)

Mpox Clades

		Clade I	Clade II
Different	Endemic to	Central Africa	West Africa
	First case in Massachusetts	June 2025	May 2022 (global outbreak)
	Population Primarily Affected since 2022	Adults, often sex workers and their contacts in Central/East Africa; household contacts; children	Adults, particularly men who have sex with men in global outbreak
	Mortality Rate	Historically thought to cause more severe illness and death (mortality rate historically 3-11%, recent outbreak ~ <1 - 2.5%)	<1% worldwide but can vary widely (as high as 9.4%)
Same	How it Spreads	Close or intimate contact with a person with mpox, direct contact with an infected animal, or contact with contaminated objects.	
	Vaccine	2 doses of JYNNEOS vaccine	
	Treatment	Most people recover with supportive care and pain control	

Mpox MPDH Clinical Advisory from June 17, 2025

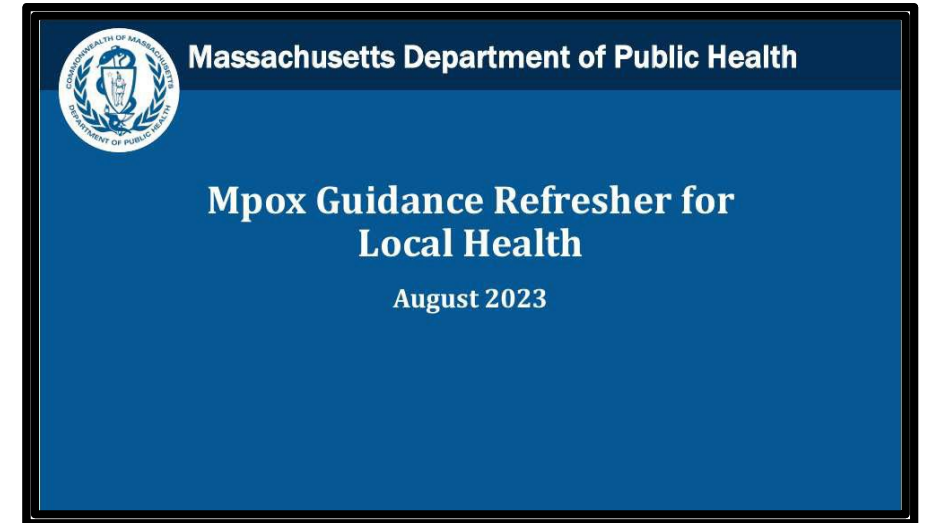
- **Announces first case of clade I mpox case in MA**
 - The case had recent travel to an East African country with sustained clade I mpox transmission. No additional spread in MA
- **Encourages:**
 - **Testing** at the SPHL for patients with compatible travel to Africa and symptoms
 - **Vaccination** of those people who are at risk for exposure during travel in addition to others who are eligible for mpox vaccine
 - **Provider awareness**
 - **Reporting** of suspect clade I mpox cases to MDPH at 617-983-6800



<https://www.mass.gov/doc/clinical-advisory-first-case-of-clade-i-mpox-diagnosed-in-massachusetts/download>

What does this mean for Local Health in MA?

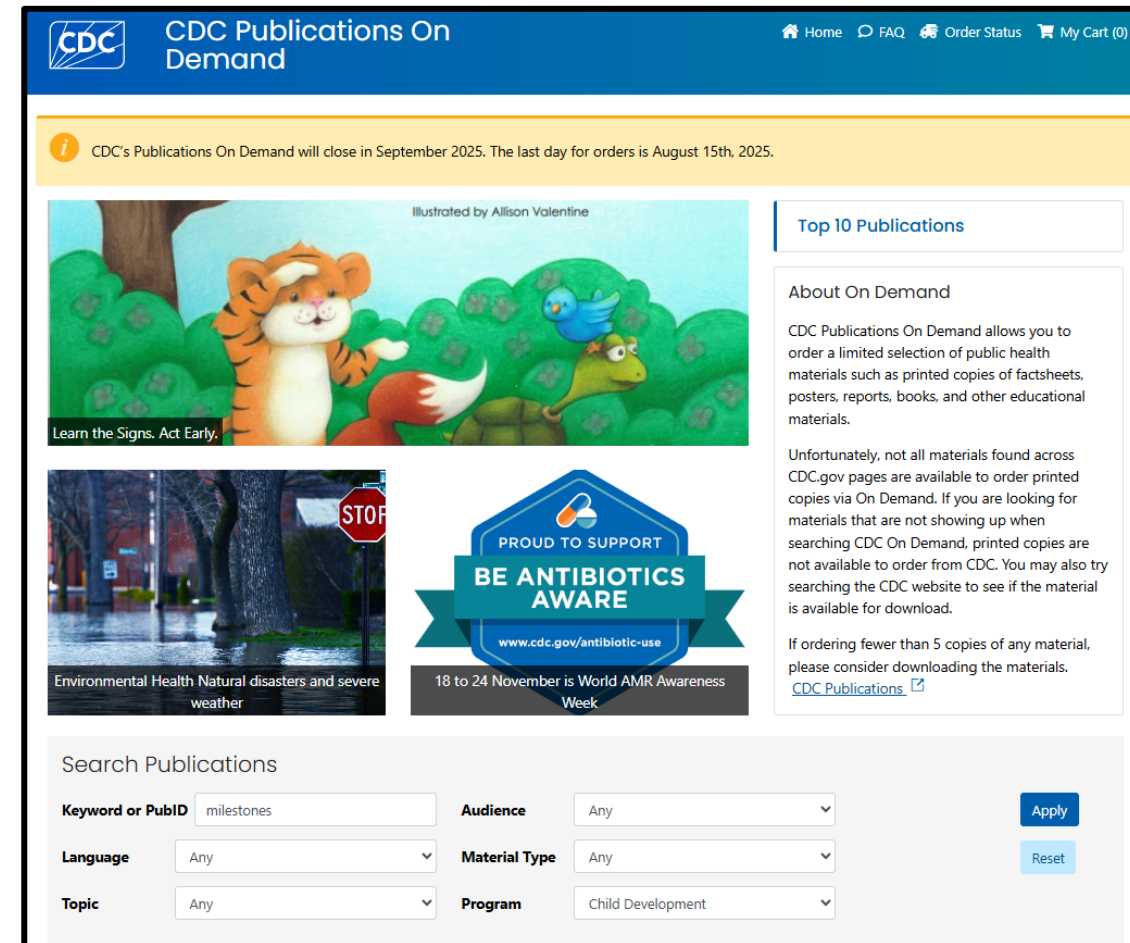
- Whether clade I or clade II, **LBOH follow up remains the same.**
- MDPH requests that local health authorities remain vigilant for potential cases of clade I.
 - Collection of risk information (i.e., travel) is important for all cases.



Please see [Mpox Refresher for Local Health](#)
MAVEN Help training

CDC Material Warehouse Closing

- For many years, CDC has offered **free printed materials** to partners and the public through our Publications Warehouse, which currently has more than 1,000 different health promotion materials, reports, and guides for a range of topics.
- As CDC offers more electronic materials, demand for printed materials has declined. CDC has decided to close the warehouse and end this service in September 2025.
- The last day to place orders for printed materials is **August 15, 2025**.
- Materials and Ordering: <https://wwwn.cdc.gov/pubs/>



MAVEN Help Updates

Open
Help

Menu

Home

Open Help

History

Case Management

Create Event

Search Event

Workflow

Import Roster

Create Cluster/Outbreak/Aggreg Event

Recent Events

Reports

Profile Management

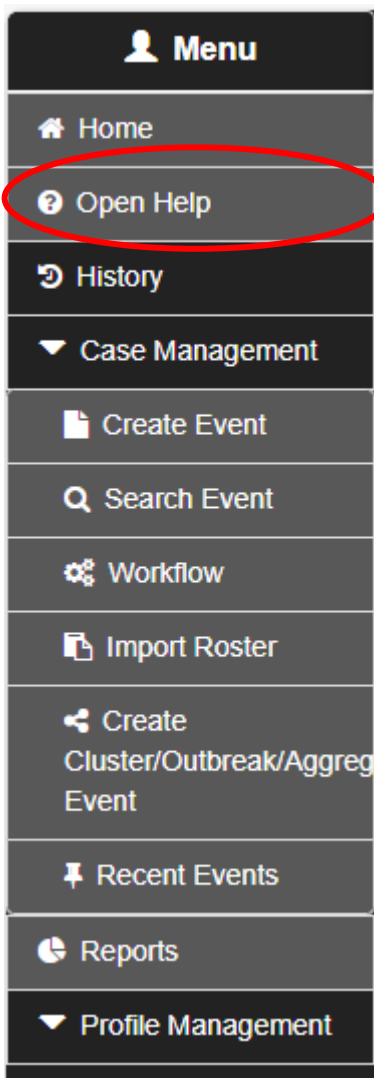
Maven Surveillance and Case Management System

Enter Case ID Search

- [MAVEN Help](https://www.maven-help.maventrainingsite.com/toc.html) is a web page:
 - <https://www.maven-help.maventrainingsite.com/toc.html>
 - You can access it while in MAVEN via the buttons on the menu.
 - You can also just bookmark the page (so you don't have to be logged into MAVEN).

MAVEN Help Updates

Open
Help



Maven Surveillance and Case Management System



Enter Case ID

Search

- [MAVEN Help](#) contains our Tuesday Webinar Recordings and Slides.
 - Each session is divided into two recordings:
 1. **DPH Updates** (which features current items, morbidity updates, and quick reminders, tools, and tips).
 2. **Featured Presentation/Topic:** Typically, a disease-specific training.
 - You can access both recordings in the **Recent Webinars (Tools for Local Health Webinar Series)** folder.
 - Disease-specific trainings and associated materials are eventually relocated to the disease-specific folders to make them easier to find. (ex, Viral Hepatitis Resources)

 [Recent Webinars \(Tools for Local Health Webinar Series\)](#)

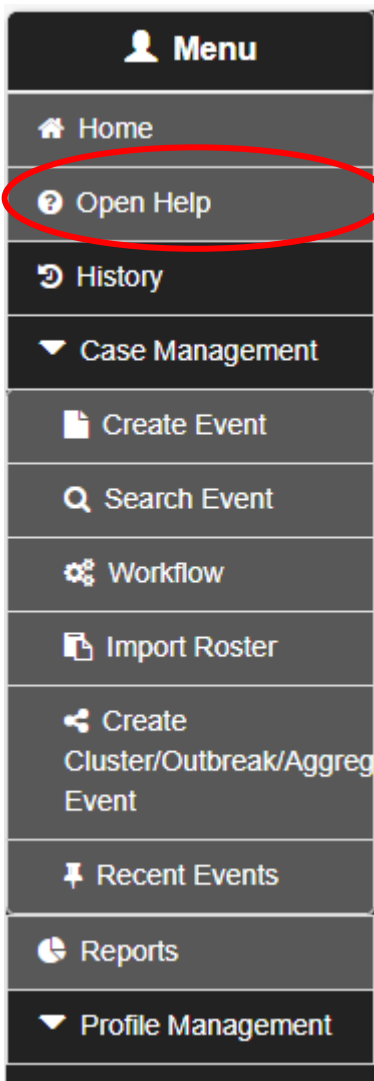
 [Vaccine Preventable Disease Resources](#)

 [Viral Hepatitis Resources](#)

 [Zoonotic \(Includes mosquito and tick diseases\) Resources](#)

MAVEN Help Updates

Open
Help



Maven Surveillance and Case Management System



Enter Case ID

Search

- **New Folder: Case Investigation Basics: General Trainings (Start Here!)**

- This new folder will feature some of our general MAVEN and Case Investigation trainings. Great for overall refreshers or for new/onboarding staff.

 [Case Investigation Basics: General Trainings \(Start Here!\)](#)

- **Topics Include:** Surveillance and Epidemiology 101, Lab Testing, Cluster Events, Pivot Tables, etc. More to come!

MAVEN Help Updates

Open
Help

Menu

Maven Surveillance and Case Management System



Enter Case ID

Search

Home

Open Help

History

Case Management

Create Event

Search Event

Workflow

Import Roster

Create
Cluster/Outbreak/Aggreg
Event

Recent Events

Reports

Profile Management

- **MAVEN Online Help Folders: How to find things?**

- **Tool Tip 1:** For better search results, expand all folders.

 [Expand all](#)  [Collapse all](#)

 [MPOX Resources](#)

 [STD Resources](#)

 [Vaccine Preventable Disease Resources](#)

 [Viral Hepatitis Resources](#)

 [Zoonotic \(Includes mosquito and tick diseases\) Resources](#)

 [Viral Hepatitis Resources](#)

 [Presentations](#)

 [Acute Hepatitis C Investigations Webinar for LBOHs_20230912 Presentation](#)

 [Acute Hepatitis C Investigations Webinar for LBOHs_20230912 Recording \(100:21\)](#)

 [2023 Introduction to Hepatitis A Case Investigations - LBOH Webinar Presentation ^{NEW}](#)

 [2023 Introduction to Hepatitis A Case Investigations - LBOH Webinar Recording \(36:52\) ^{NEW}](#)

 [February 2020 - Sex and Drug Talk for HCV Investigations webinar \(35:25\)](#)

 [February 2020 - Sex and Drug Talk for HCV Investigations webinar slides](#)


 [February 2020 - Sex and Drug Talk for HCV Investigations webinar Script](#)


 [February 2020 - SAMPLE Introduction for case follow-up](#)

 [Tip Sheets](#)

 [TEMPLATE - Educational letter for providers about appropriate use of hepatitis A IgM test \(false positives\)_July2022 ^{UPDATED}](#)

 [Tip Sheet for Acute Hepatitis C Investigations _Sept2023_Ver. 2.0 ^{NEW}](#)

 [How to Investigate Suspect Hepatitis A Cases ^{UPDATED}](#)

 [Hepatitis B Contact Investigation Tip Sheet for LBOH_July 2024 ^{UPDATED}](#)

MAVEN Help Updates

Open
Help

Menu

Maven Surveillance and Case Management System



Enter Case ID

Search

Home

Open Help

History

Case Management

Create Event

Search Event

Workflow

Import Roster

Create
Cluster/Outbreak/Aggreg
Event

Recent Events

Reports

Profile Management

- [MAVEN Online](#) Help Folders: How to find things?

- **Tool Tip 2:** To find a document press the **ctrl key and F key** (Control “Find”).

- A search bar appears at the top of the page.
- Type in your search term.
- Matching terms will be highlighted.

measles

1/2



Vaccine Preventable Disease Resources

Presentations

- Oct_08_2024_MDPH Tuesday-Webinar Series_Respiratory Illness
- Oct_08_2024_MDPH Tuesday-Webinar Series_Respiratory Illness
- Apr_9_2024_MDPH Tuesday Infectious Disease Webinar Series R
- Apr_9_2024_MDPH Tuesday Infectious Disease Webinar Series R
- Jan_9_2024 MIIS Overview for LBOHs Presentation
- Jan_9_2024 MIIS Overview for LBOHs Recording (45:03)
- Oct_10_2023 Influenza Surveillance for LBOH_2023-2024 Prese
- Oct_10_2023 Influenza Surveillance for LBOH_2023-2024 Recor
- March 14_2023 Invasive Meningococcal Disease Investigations fo
- March 14_2023 Invasive Meningococcal Disease Investigations fo
- February 14_2023 Introductions to Measles Presentation
- February 14_2023 Introductions to Measles Recording (1:06:41)

Note: You must **Expand** a folder for the word search to find something. It will not find matches in folders that are not open.

MAVEN Help Updates

Open
Help

Menu

Maven Surveillance and Case Management System



Enter Case ID

Search

Home

Open Help

History

Case Management

Create Event

Search Event

Workflow

Import Roster

Create
Cluster/Outbreak/Aggreg
Event

Recent Events

Reports

Profile Management

• MAVEN Online Help Folders: More To Come

MAVEN Online Help

Navigate to.... ▼

MAVEN Online Help Folders

Tool Tip 1: For better search results expand all folders

Tool Tip 2: To find a document press the ctrl key + F key

[Expand all](#) [Collapse all](#)

[Case Investigation Basics: General Trainings \(Start Here!\)](#)

[Recent Webinars \(Tools for Local Health Webinar Series\)](#)

[Antibiogram](#)

[Case Classification Manual](#)

[COVID-19 Resources](#)

[Foodborne and Enteric \(Gastrointestinal\) Disease](#)

[Global Populations and Refugee Resources \(Includes Tuberculosis\(TB\)\)](#)

Remember to **register** for the live **Tuesday Tools for Local Health Webinar Series** here:
<http://tinyurl.com/MAVEN-Webinars>

[Group A Streptococcus\(GAS\)](#)

[Infection Preventionist Resources](#)

[Legionella Resources](#)

[MAVEN Resources](#)

[MPOX Resources](#)

[STD Resources](#)

[Vaccine Preventable Disease Resources](#)

[Viral Hepatitis Resources](#)

[Zoonotic \(Includes mosquito and tick diseases\) Resources](#)

QUESTIONS?

